

NEBRASKA DEPARTMENT OF HEALTH AND HUMAN SERVICES

GUIDANCE DOCUMENT

“This guidance document is advisory in nature but is binding on an agency until amended by such agency. A guidance document does not include internal procedural documents that only affect the internal operations of the agency and does not impose additional requirements or penalties on regulated parties or include confidential information or rules and regulations made in accordance with the Nebraska Administrative Procedure Act. If you believe that this guidance document imposes additional requirements or penalties on regulated parties, you may request a review of the document.”

Pursuant to
Neb. Rev. Stat. § 84-901.03

QUARTERLY MONITORING

Revised Total Coliform Rule

As of April 1, 2016, this fact sheet applies to all non-community public water systems (NCWSs) serving 1,000 or fewer people that are required to collect at least one routine total coliform (TC) sample quarterly.

STEP 1: DEVELOP / UPDATE SYSTEM'S SAMPLE SITING PLAN

Develop a sample siting plan and have it ready for use by April 1, 2016. If the system already has a sample siting plan for the Total Coliform Rule (TCR), update this plan to meet the requirements of the RTCR.

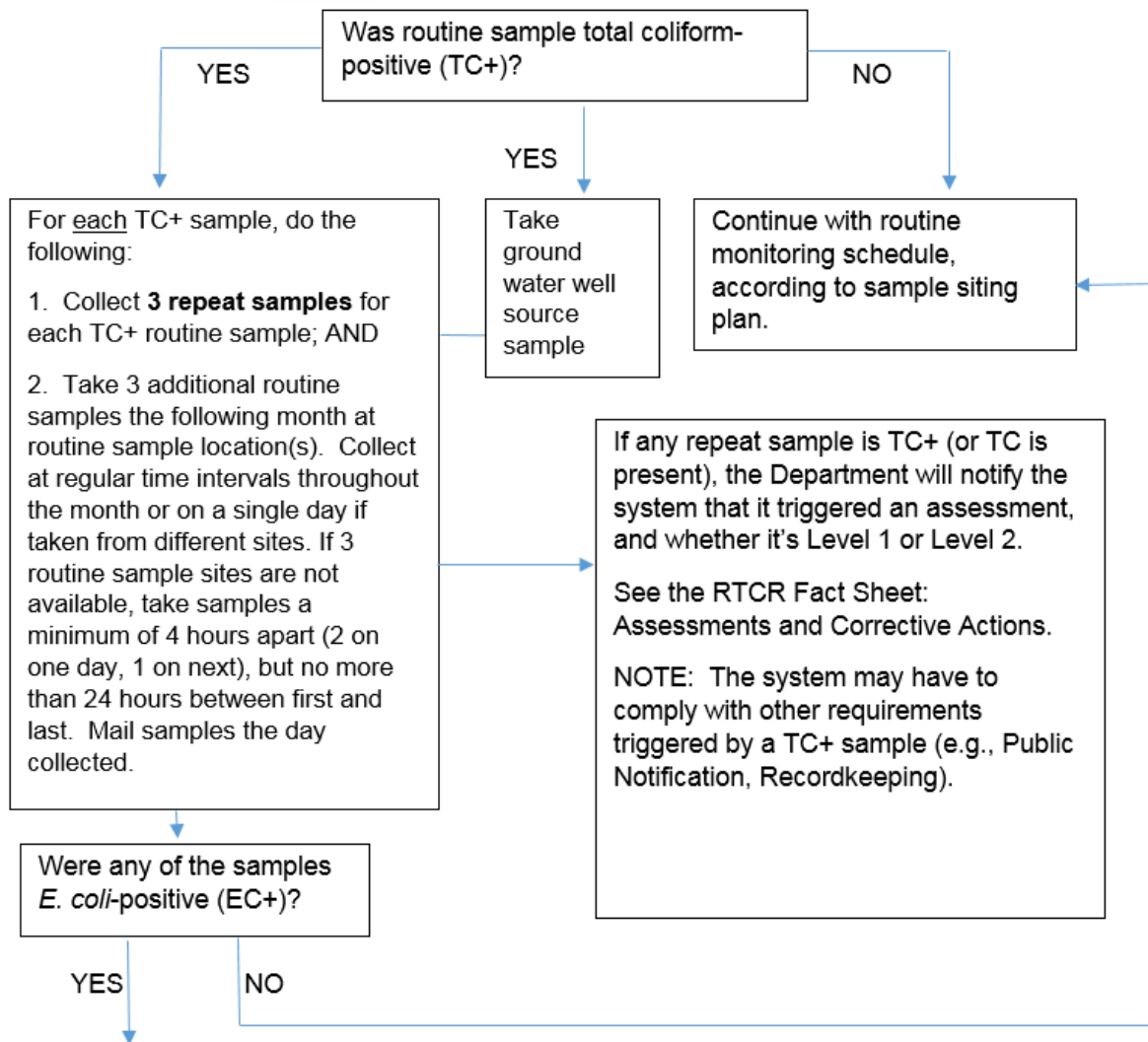
- LIST THE LOCATIONS WHERE THE SYSTEM WILL TAKE SAMPLES (ROUTINE AND REPEAT) OR INCLUDE A STANDARD OPERATING PROCEDURE (SOP) WITH THE SAMPLE SITING PLAN THAT EXPLAINS HOW SITES FOR REPEAT SAMPLES WILL BE DETERMINED;*
- LIST THE LOCATION(S) WHERE TRIGGERED GROUND WATER SAMPLES WILL BE TAKEN;
- UPDATE TO REFLECT CHANGES AT PWS: The sample siting plan is a living document and should be updated when necessary to reflect changes at PWS such as: major changes in population; a new or additional water source; infrastructure changes, such as a change in the distribution system (i.e., extended / abandoned lines) or pressure zones; or changes in disinfection or other treatment.

STEP 2: COLLECT DRINKING WATER SAMPLES

- COLLECT AT LEAST ONE 100 ML routine drinking water sample every quarter.
- IMMEDIATELY SEND THE SAMPLE TO A STATE-CERTIFIED LAB that performs total coliform drinking water analyses.
 - ✓ Remember the lab must **begin analyzing** the drinking water sample no later than the 30th hour from the collection time.

*Sample Siting Plan Repeat Sample Site SOP

Repeat samples will be taken within 5 service connections upstream and downstream from the TC+ site when feasible. They will be taken more than 5 service connections from the TC+ sample when no site within that distance is available that meets the criteria for a routine sample. A repeat site will be clean, representative of the distribution system, available, and in the same area of the distribution system as the site at which the TC+ sample was taken. A template is available online at dhhs.ne.gov/drinkingwater



STEP 3: CONDUCT ACTIONS REQUIRED AS A RESULT OF SAMPLING

After any of the following occurrences, the Department will notify the system that it has to perform a Level 2 Assessment:

- TC+ Routine and EC+ Repeat sample;
- EC+ Routine and TC+ Repeat sample;
- The PWS fails to take and analyze all 3 required repeat samples following an EC+ routine sample.

Within 30 days after a system learns it has triggered an assessment, a completed assessment form must be submitted to the Department.

See the RTCR Fact Sheet: Assessments and Corrective Actions.

NOTE: The sample siting plan is subject to review and revision by the Department.

Phone: 402-471-0521. Visit our website at <http://dhhs.ne.gov/drinkingwater> for more information.