
Regional Ambient Fish Tissue Monitoring Program

2021 Data Assessment Report

NEBRASKA

The logo for the Nebraska Department of Environment and Energy features the word "NEBRASKA" in a bold, blue, sans-serif font. A yellow swoosh underline is positioned beneath the letters, starting under the 'N' and ending under the 'A'.

Good Life. Great Resources.

DEPT. OF ENVIRONMENT AND ENERGY

July 2022

ACKNOWLEDGEMENTS

I would like to acknowledge the staff members from the Nebraska Department of Environment and Energy (NDEE) who assisted with field collection activities in 2021.

I also want to acknowledge Deanna Collier of the United States Environmental Protection Agency (EPA) Region VII laboratory for her support of Nebraska's fish tissue monitoring, analysis and assessment efforts.

If you have questions or concerns after reading this report, please contact me at (402) 471-4264 or greg.michl@nebraska.gov for assistance.

Greg Michl
Program Coordinator

TABLE OF CONTENTS

	<i>Page</i>
ACKNOWLEDGEMENTS	i
LIST OF FIGURES	iii
LIST OF TABLES	iii
I. EXECUTIVE SUMMARY	1
II. INTRODUCTION.....	3
III. SAMPLING METHODS	5
IV. RISK ASSESSMENT	8
Hazard Identification.....	9
Dose-Response Assessment	9
Exposure Assessment.....	10
Risk Characterization.....	11
V. CRITERIA FOR ISSUING A PUBLIC HEALTH ADVISORY	12
Authority	12
Health Risk Assessment Method	12
Sampling Location Requirements	12
Advisory Criteria.....	13
VI. RESULTS AND DISCUSSION.....	15
2021 Sampling Effort and Purpose	15
Contaminants of Concern.....	15
Methylmercury	15
Polychlorinated Biphenyls	15
Risk Assessment Results	16
VII. SUMMARY	21
LITERATURE CITED	24
<i>Appendix A: Table and Maps of Nebraska Fish Consumption Advisories through 2021.....</i>	<i>25</i>

LIST OF FIGURES

	<i>Page</i>
Figure 1. Statewide Historical and 2021 Lower Platte and Nemaha River Basin Fish Tissue Sampling Sites.....	2
Figure 2. NDEE’s Six-Year Basin Rotation Monitoring Schedule.....	4
Figure 3. Monitoring Scheme for the Nebraska Fish Tissue Monitoring Program.....	14

LIST OF TABLES

	<i>Page</i>
Table 1. 2021 Advisory and Screening Sites in Nebraska.....	6
Table 2. Length Requirements for Fish Collected During RAFTMP Sampling.	8
Table 3. Parameter Analysis and Target Reporting Limits of Fish Tissue Samples Analyzed by the EPA Region VII Laboratory and State Hygienic Laboratory – University of Iowa	8
Table 4. Fish Tissue Contaminants and Associated Risk Assessment Parameters.....	10
Table 5. Fish Tissue Risk Assessment Results for Nebraska Streams and Lakes Monitored in 2021	16
Table 6. List of Waterbodies with an Advisory Status Change for 2021	21

I. EXECUTIVE SUMMARY

The Nebraska Department of Environment and Energy (NDEE) annually samples fish for tissue analyses as part of the U.S. Environmental Protection Agency's (EPA) "Regional Ambient Fish Tissue Monitoring" (RAFTM) program. The EPA's Region VII laboratory in Kansas City, Kansas conducts the chemical analyses of these tissue samples. Historically samples have been analyzed for four heavy metals, nine pesticides and their breakdown products, and three polychlorinated biphenyl compounds (PCBs). In 2013, EPA informed the Region VII States that with the exception of mercury, future analysis for all other contaminants would be discontinued due to their declining trends and/or non-detects in fish tissue samples. Overall, this is very positive environmental news for this region. While mercury continues to be the major pollutant of concern in fish tissue statewide, numerous locations remain under "fish consumption advisories" for PCBs. The NDEE is committed to continue PCB monitoring at those locations using a contract laboratory.

The EPA's primary monitoring and assessment objectives for the RAFTM program are:

- Provide states with data to answer the question "are the fish safe to eat?"
- Provide states with data needed to assess risk to humans from consuming contaminated fish and to post consumption advisories.
- Measure long-term trends in regional contaminants (e.g., pesticides, metals, PCBs, etc.) and monitor for emerging contaminants of concern.

This report details the data assessment results for fish tissue samples collected in 2021 in the Lower Platte and Nemaha River basins. A total of 114 fish tissue samples were collected from 10 streams/ivers and 46 lakes/reservoirs (see Figure 1 and Methods Section for site descriptions).

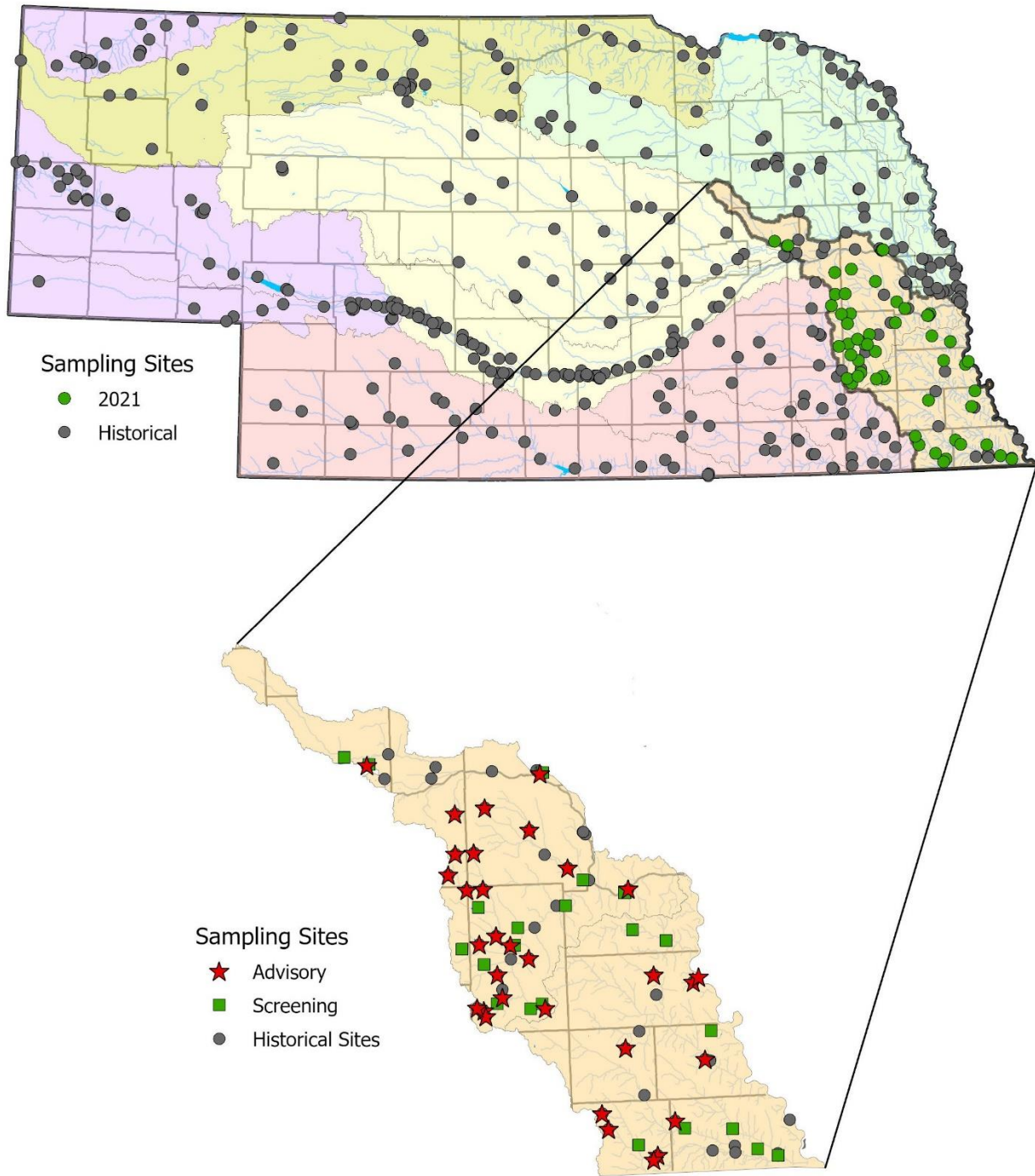
Currently, Nebraska has 137 state-issued advisories. The primary contaminants of concern in Nebraska fish and most other states continues to be mercury and PCBs. The EPA has issued a nationwide fish consumption advisory regarding mercury in all fish species. Women of child-bearing age and children under 15 years of age are the population most sensitive to the effects of mercury.

This report provides the public with an explanation of the State's fish tissue program. One of the primary goals of the program is to ensure the public has as much information as possible regarding the waterbodies that they use for fishing.

Because fish are a high quality protein, low in saturated fat, and high in omega-3 fatty acids, anglers should not be discouraged from consuming fish in moderation. In 2013, the Department of Health and Human Services (NDHHS) in cooperation with the Nebraska Game and Parks Commission (NGPC) and NDEE jointly released an informational brochure on safely selecting and preparing locally caught, store bought, and restaurant fish. The brochure can be viewed in English, Spanish, or Vietnamese:

- [Eat Safe Fish in Nebraska](#)
- [Coma Pescado Seguro en Nebraska](#)
- [Ăn Cá An Toàn Trong Nebraska](#)

Figure 1. Statewide Historical and 2021 Lower Platte and Nemaha River Basin Fish Tissue Sampling Sites (see Table 1 for site list).



NOTE: Screening sites are waterbodies selected for screening of contaminants of concern in fish tissue at locations that have never been monitored or have not been sampled for a relatively long period of time. Advisory sites are waterbodies that were already under advisory which were re-sampled.

II. INTRODUCTION

The “Regional Ambient Fish Tissue Monitoring Program – 2021 Data Assessment Report” is written to satisfy the federal fiscal year 2021 State of Nebraska-EPA Agreement, as well as provide information to other governmental agencies, professional organizations, and most importantly to the general public. It is important that anglers and others are informed of potential health risks associated with consuming contaminated fish from certain Nebraska waterbodies.

Fish tissue sampling in Nebraska was initiated in the late 1970s, primarily to identify potential pollution concerns throughout the State. Sampling consisted of collecting whole fish samples from major rivers at or near the bottom of their drainage area. In the late 1980s, along with the identification of pollutants, sampling was conducted to determine if there may be a public health concern. Fillet samples were then collected and analyzed as this is the portion of a fish that is most-often consumed. Waters heavily utilized by anglers were generally targeted.

Under the Region VII EPA Ambient Fish Tissue Monitoring Program (RAFTMP), the NDEE, in association with its six-year rotating river basin monitoring schedule (see Figure 2), collects fish from state waters annually. The Region VII EPA laboratory in Kansas City, Kansas, analyzes samples for mercury, and the University of Iowa - Hygienic Laboratory in Iowa City, Iowa conducts the PCB and analyses when necessary.

The EPA’s stated objectives of the RAFTMP are:

1. Provide states with data to answer the question “are the fish safe to eat?”
2. Provide states with data needed to assess risk to humans from consuming contaminated fish and to issue consumption advisories.
3. Measure long-term trends in regional contaminants (e.g., pesticides, metals, PCBs, etc.) and monitor for emerging contaminants of concern.

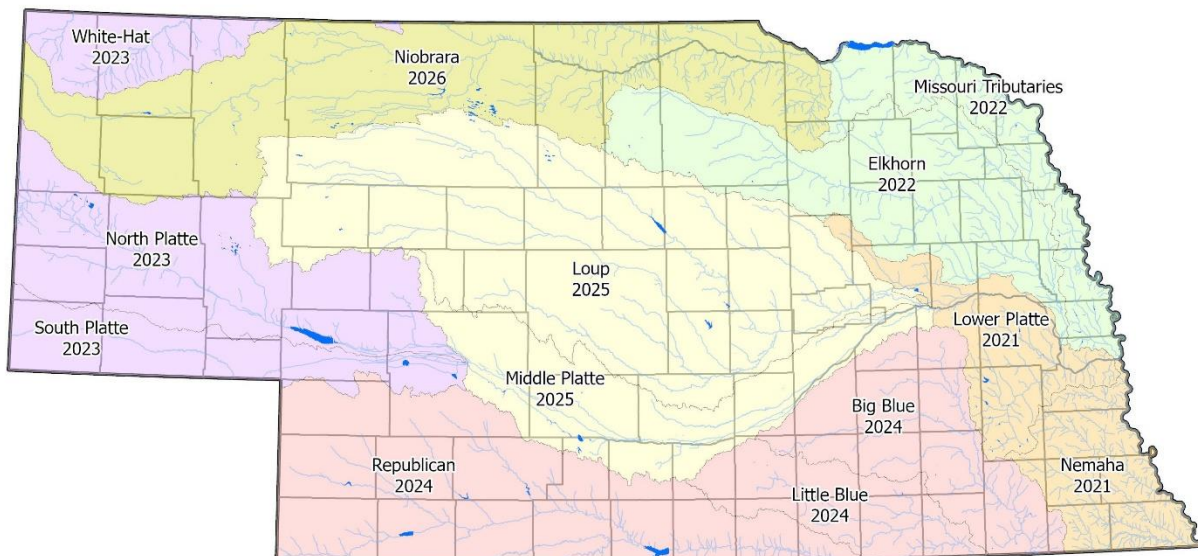
Waterbodies where RAFTMP sampling has revealed exceedances of health risk criteria and subsequent consumption advisories have been issued; are re-sampled following the rotating basin monitoring schedule. Re-sampled sites will be removed from the advisory list if their respective samples indicate contaminant levels below human health risk criteria.

Currently the NDHHS, in cooperation with the NDEE, the NGPC, and NDA, issues fish consumption advisories for waterbodies where concentrations of contaminants may indicate a human health risk for consumers. Using risk-based calculations, it is assumed that a consumer will ingest a weekly average of eight or more ounces of fish from the waterbody being assessed, every week for over 26 years. This very conservative approach is designed to not underestimate the risks and is referred to as a “reasonable maximum exposure duration” (EPA, 2020b). The State issues advisories for mercury levels that equal or exceed 0.215 milligrams of mercury per kilogram of fish tissue, and for other contaminants when the cancer risk estimated equals or exceeds 0.0001 (≥ 1 in 10,000) or when adverse noncancer health effects may be possible from ingesting fish. Although Nebraska does not issue fishing bans, advisories suggest that individuals consume less than an average of one, eight-ounce meal of fish per week from identified waters.

While nearly every state in the U.S. has a fish tissue monitoring program in place, differences exist in the way fish samples are analyzed and assessed between states. These differences create a lack of comparability between states and can cause confusion for people who enjoy fishing in their home state, shared waters, and other states’ waters.

For example, while one state may screen their fish samples for a particular set of contaminants, other states may analyze an entirely different group; and some states will analyze fish tissue only during years when adequate funding is available (EPA, 1999). Differences may also exist in parameter lists generated

Figure 2. NDEQ’s Six-Year Basin Rotation Monitoring Schedule.



because certain contaminants have regional importance (pesticide usage based on cropping practices), while others (methylmercury) are of national interest. Contaminant lists are also formed based on the variety of industries and their use of chemicals within states. While differences are expected in the contaminant lists submitted for analyses from state to state, there is a strong possibility that several toxicants are overlooked by states due to their obscurity or due to a lack of funding for analytical support. Additionally, some contaminants (e.g. lead) lack reference dose information necessary to determine its toxic effects associated with consuming fish, and assessments are rarely performed.

Like Nebraska, most states are utilizing a risk-based assessment (RBA) approach similar to that used by the EPA. In the assessment process, in addition to determining if a contaminant poses a potential cancer risk, the potential for adverse health effects or noncarcinogenic effects are also estimated. For example, mercury is not considered to be a human carcinogen but exposure to high levels may be associated with adverse effects for the developing nervous system of young children or an unborn baby. Nebraska’s “Policy for Issuing Nebraska Fish Consumption Advisories” (NDEQ, 2011) explains the rationale behind and the process employed to issue fish consumption advisories.

Risk-based assessments utilize standardized equations and estimated exposure parameters, such as ingestion rates and exposure durations, to quantify an individual’s risk associated with exposure to a contaminant. These equations result in values that can be compared to published toxicity values generated from exposure studies in animals, and if available from epidemiological studies in humans. Below are the exposure parameters that Nebraska utilizes to estimate potential risk associated with ingestion of fish tissue.

Body Weight (BW) – is important because heavier individuals have the ability to assimilate more contaminants than individuals of smaller stature without experiencing adverse health effects. Therefore, children or adults of small stature are at greater risk when consuming fish at a similar rate as a larger individual. All states assume an overall average for consumer body weight when calculating risk - Nebraska utilizes 154 pounds (70 kg).

Ingestion Rate (IR) – fish ingestion rates of individuals in a population vary greatly and health risks increase with higher ingestion rates. The EPA has identified a value of eight ounces (0.227 kg) of fish fillet per 154 pound (70 kg) as an average weekly meal size for adults for the general populations (EPA, 2000). Nebraska utilizes the eight-ounce average (0.227 kg).

Contaminant Absorption Factor (AF) – suggests how much of a contaminant, once ingested, is absorbed in the human body. Nebraska conservatively uses a factor of 1.0, reflecting complete absorption (i.e., no contaminant loss through storage, cooking, or excretion). Contaminant reduction factors are used by several states (including most Great Lakes States) to reduce PCB concentrations based on meal preparation procedures. All of the states that use reduction factors apply a 50% reduction for PCBs due to removal via filleting away fatty tissue and cooking in a way that allows fat to drip away from the flesh (i.e., grilling, broiling).

Exposure Frequency (EF) – is an estimate of how often an individual is exposed to or is ingesting fish from a particular waterbody. Nebraska conservatively assumes that an individual may ingest fish from the same waterbody weekly.

Exposure Duration (ED) – is an estimate of how long an individual is exposed to or is ingesting fish from a particular waterbody. Nebraska utilizes what is referred to as a “reasonable maximum exposure duration” of 26 years (EPA, 2020b). Advisories are issued under this assumption, but shorter exposure durations are more likely.

III. SAMPLING METHODS

Sampling sites for the RAFTM program are currently categorized into two different types. They are:

- 1) *Screening* – waterbodies selected for screening of contaminants of concern in fish tissue at locations that have never been monitored or have not been sampled for a relatively long period of time.
- 2) *Advisory* – waterbodies that were already under advisory which were re-sampled.

From July through September of 2021, the NDEE collected 114 fish samples from 56 locations (one or more sampling sites at 10 streams/rivers and 46 lakes/reservoirs). Thirty-one advisory and 25 screening sites were monitored in accordance with the RAFTMP in 2021 throughout the Lower Platte and Nemaha River basins (see Figure 2). Table 1 identifies each site sampled in 2021.

In small streams, a backpack or pull-barge electro-fishing units were used to collect fish. To collect fish from larger streams, hoop nets, and/or a small aluminum boat designed for electro-fishing was used. The nets and electro-fishing gear were employed within a reach one mile above to one mile below the designated site location. Lake and reservoir sampling was conducted using larger electro-fishing boats and/or gill nets. Depending on conditions, direct or alternating current was used to shock the fish.

Considerable sampling effort is given to collect tissue samples from as many “angler-targeted” fish species as possible from screening and advisory sites (i.e., largemouth and smallmouth bass, yellow perch, northern pike, walleye, bluegill, white and black crappie, channel and flathead catfish, carp, etc.). To ensure data comparability at advisory sites, it is a priority to collect the fish species that previously exhibited contaminant concentrations above the State’s accepted risk criteria.

Samples collected from screening and advisory sites (see Figure 1) are a composite made up of three to five fish of the same species. Biopsy tissue plugs removed from the dorsal muscle region of each fish were kept for all samples in 2020 for mercury analysis. Additionally, fillets (edible portions) were retained for PCB analysis at two locations. Size requirements of fish collected for analyses are provided in Table 2. In all samples, the total length of the smallest specimen was not to be less than 75 percent of the total length of the longest specimen.

Length and weight measurements of each fish used in composite samples are recorded on a field sheet. Fillet samples are prepared in the field with the scales removed from scaled fish and skin removed from catfish and bullhead species. Biopsy tissue samples for mercury analysis are collected by scraping the scales away from a small area near each fish’s dorsal fin before removing the plug. Samples are

frozen as soon as possible after collection. The biopsy tissue samples collected for mercury analysis were later analyzed at the Region VII EPA laboratory in Kansas City, Kansas. Fillets samples collected for PCB analysis were analyzed at the University of Iowa - State Hygienic Laboratory in Coralville, Iowa.

Parameter coverage and reporting limits for tissue samples analyzed are listed in Table 3. Because of the higher cost of methylmercury analysis, the EPA Region VII Laboratory only measures for total mercury in fish tissue. Numerous studies have shown that more than 90 percent of the total mercury in fish tissue is methylmercury (EPA, 2009). Because this conservative assumption is protective of human health, Nebraska is supportive of this decision.

Table 1. 2021 Advisory and Screening Sites in Nebraska.

WATERBODY	COUNTY	SITE TYPE	# SPECIES/ SAMPLES COLLECTED
Redtail Lake	Butler	Advisory	2
Homestead Lake	Butler	Advisory	3
Timber Point Lake	Butler	Advisory	2
Platte River	Cass	Advisory	3
Wirth Brothers Lake	Johnson	Advisory	3
Oak Creek	Lancaster	Advisory	2
Holmes Lake	Lancaster	Advisory	4
Wildwood Reservoir	Lancaster	Advisory	2
Merganser Lake	Lancaster	Advisory	3
Pawnee Lake	Lancaster	Advisory	4
Yankee Hill Lake	Lancaster	Advisory	2
Auburn Rotary Club Lake	Nemaha	Advisory	3
Steinart Park Lake	Otoe	Advisory	2
Wilson Creek 2X - WMA	Otoe	Advisory	2
Missouri River	Otoe	Advisory	1
Prairie Knoll Lake	Pawnee	Advisory	2
Iron Horse Trail Lake	Pawnee	Advisory	3
Burchard Lake	Pawnee	Advisory	2
Mayberry WMA Lake	Pawnee	Advisory	2
Kirkman's Cove Lake	Richardson	Advisory	2
Memphis Lake	Saunders	Advisory	2
Czechland Lake	Saunders	Advisory	2
Red Cedar Lake	Saunders	Advisory	2
Lake Wanahoo	Saunders	Advisory	2
Fremont Lake No. 20E - SRA	Dodge	Advisory	2
Bowling Lake	Lancaster	Advisory	2
Cottontail Lake	Lancaster	Advisory	2
Olive Creek Lake	Lancaster	Advisory	2
Wild Plum Lake	Lancaster	Advisory	3
Hedgefield Lake - WMA	Lancaster	Advisory	1

Table 1. Continued.

WATERBODY	COUNTY	SITE TYPE	# SPECIES/ SAMPLES COLLECTED
Lake Babcock	Platte	Advisory	2
Meadowlark Lake	Seward	Advisory	3
Weeping Water City Lake	Cass	Screening	2
Louisville Lake No. 2 - SRA	Cass	Screening	2
Salt Creek	Cass	Screening	1
Weeping Water Creek	Cass	Screening	1
Louisville Lake No. 3 - SRA	Cass	Screening	2
Fremont Lake No. 15 - SRA	Dodge	Screening	2
Fremont Lake No. 12 - SRA	Dodge	Screening	1
Stagecoach Lake	Lancaster	Screening	1
Bluestem Lake	Lancaster	Screening	2
Conestoga Lake	Lancaster	Screening	1
Branched Oak Lake	Lancaster	Screening	4
Wagon Train Lake	Lancaster	Screening	2
Little Salt Creek	Lancaster	Screening	1
Antelope Creek	Lancaster	Screening	1
Duck Lake	Nemaha	Screening	2
Pawnee City Lake	Pawnee	Screening	2
Lake North	Platte	Screening	2
Shell Creek	Platte	Screening	1
Verdon Lake	Richardson	Screening	2
Stanton Lake	Richardson	Screening	2
Big Nemaha River	Richardson	Screening	1
North Fork Big Nemaha River	Richardson	Screening	1
Wahoo Creek	Saunders	Screening	1
East Twin Lake	Seward	Screening	3

Table 2. Length Requirements for Fish Collected During RAFTMP Sampling.

FISH SPECIES	SIZE (Total Length)	FISH SPECIES	SIZE (Total Length)
Bluegill	6 – 8 inches	Largemouth Bass	15 – 20 inches
Buffalo	15 – 24 inches	Northern Pike	24 – 30 inches
Bullhead	8 – 12 inches	Sauger / Hybrids	12 – 18 inches
Common Carp	14 – 21 inches	Smallmouth Bass	10 – 18 inches
Channel Catfish	14 – 21 inches	Trout (any species)	10 – 14 inches
Crappie (black/white)	8 – 12 inches	Walleye	14 – 20 inches
Flathead Catfish	18 – 24 inches	White Bass	10 – 12 inches
Freshwater Drum	10 – 18 inches	-	-

Table 3. Parameter Analysis and Target Reporting Limits of Fish Tissue Samples Analyzed by the EPA Region VII Laboratory and State Hygienic Laboratory – University of Iowa.

PARAMETER	TARGET REPORTING LIMIT (mg/kg)
<i>EPA Region VII Laboratory</i>	
Mercury <i>(Analysis by Cold Vapor Atomic Absorption)</i>	0.0181
<i>State Hygienic Laboratory - University of Iowa</i>	
PCB-1248	0.020
PCB-1254	0.020
PCB-1260	0.020
Dieldrin	0.005
<i>(Analysis by Gas Chromatograph/Electron Capture - EPA 8082)</i>	

IV. RISK ASSESSMENT

The EPA’s risk assessment methodology (EPA, 1989) is utilized by Nebraska for evaluating potential health risks associated with the ingestion of fish. The EPA method includes the following four steps:

1. Hazard Identification – A qualitative evaluation of the potential for a contaminant to cause an adverse health effect (i.e., birth defect, cancer) in animals or humans.
2. Dose-Response Assessment – A quantitative estimation of the relationship between the dose of a substance and the probability of an adverse health effect.
3. Exposure Assessment – The characterization of an individual’s magnitude, frequency, and duration of exposure.

4. **Risk Characterization** – A combination of the dose-response and exposure assessment steps that provides a quantitative estimation of the risk for the exposed individual.

Hazard Identification

Contaminants selected by the EPA for assessment were determined based on known usage in the State and/or past detection in the State's waterbodies, and because exposure at high levels may be associated with adverse health effects (as indicated in EPA's IRIS - Integrated Risk Information System database) (EPA, 2021a). The only contaminant included in the risk assessment for screening sites was mercury. Sites currently under advisory for PCBs were also screened for three Aroclors (1248, 1254, and 1260) and one for dieldrin.

Dose-Response Assessment

Two toxicity values are utilized to determine at what dose or level adverse noncarcinogenic effects and/or cancer may be anticipated from exposure to a contaminant. The concentration of a contaminant found in fish tissue is used to determine an intake (equivalent to an administered dose) for a consumer and this value is compared to its corresponding toxicity value(s) to determine if any risk may be present.

The first is referred to as an oral Reference Dose (RfD). A reference dose is an estimate of a daily exposure level for an individual to a contaminant that is likely not to be associated with adverse health effects. Chronic RfDs that are used in this report are designed to be protective for long-term exposure to a contaminant (seven years to a lifetime) and are protective for even sensitive populations such as small children. It should be noted that for many noncarcinogenic effects, the body has protective mechanisms that must be overcome before the adverse effect appears. In other words, no adverse effect is anticipated until a certain level of exposure to a contaminant is reached, referred to as a threshold level.

The second toxicity value utilized is referred to a Cancer Slope Factor (CSF). A CSF is an upper-bound estimate of the probability of a response (cancer) associated with the per unit intake of a contaminant over a lifetime. For carcinogens, it is believed that there is no level of exposure that is not associated with, however small, a probability of some carcinogenic response. This concept is referred to as non-threshold.

It should be noted that varying degrees of uncertainty surround the assessment of the adverse health effects in an exposed individual. For example, there is uncertainty in the dose-response data from experiments on animal populations that are identical, used to predict effects in a diverse human population which display a wide range of sensitivities, and extrapolation of the data from high dose animal studies to low dose human environmental exposure. Because of this, the EPA's risk assessment guidance recommends a conservative approach to data interpretation, resulting in toxicity values that are more likely to overestimate the true risk posed by exposure to a chemical.

Table 4 presents the contaminants that were assessed for in the State's waterbodies. The oral RfDs and CSFs used for these assessments are from the EPA's regional screening levels (RSLs) summary table (EPA, 2021b).

Table 4. Fish Tissue Contaminants and Associated Risk Assessment Parameters - Reference Dose (RfD) and Cancer Slope Factors (CSF) (EPA, 2021b).

CONTAMINANT	RfD (mg/kg/day)	CSF (mg/kg/day)
Aroclor 1248 – (PCB-1248)	NA	2.0
Aroclor 1254 – (PCB-1254)	0.00002	2.0
Aroclor 1260 – (PCB-1260)	NA	2.0
Methylmercury	0.0001	NA
Dieldrin	0.00005	16.0

NA – Not applicable or not available

Exposure Assessment

In the exposure assessment, several estimates and assumptions are required to describe the magnitude, frequency, duration, and routes of exposure to a contaminant. The estimates and assumptions that Nebraska has selected include the following:

- Consumption of contaminated fish tissue was the only route of exposure considered. Since the assessment only focuses on risk from contaminated fish, exposure to contaminants in surface water and sediments were not assessed.
- The detected contaminant concentration in the fish tissue assessed was assumed to be the concentration consumed. This approach is very conservative as some of the contaminant is likely lost during meal preparation and cooking, and some is excreted from the body without effect. It should be noted that the laboratory can only accurately quantify the concentration of a contaminant above a certain limit referred to as a reporting limit (RL). Contaminants not detected - or below the analytical RL are not included in the risk assessment calculations.
- For the purposes of advisory issuance, a 154 lbs (70 kg.) average body weight was used, consistent with EPA guidance (EPA, 2000).
- The average weekly meal size identified for a 154 lb (70 kg) adult in the general population is eight ounces (0.227 kg) of uncooked fish fillet (EPA, 2000). For the purposes of advisory issuance, Nebraska uses this eight ounce weekly average meal ingestion rate.

Results of the dose-response and exposure assessments are combined to characterize human health risks. Estimated intakes for contaminants assessed are determined using the equation below:

$$\text{Intake (mg/kg/day)} = \frac{(\text{CC})(\text{IR})(\text{EF})(\text{ED})(\text{AF})}{(\text{BW})(\text{AT})}, \text{ where}$$

CC = Contaminant Concentration in fish tissue - mg/kg

* IR = Ingestion Rate - weekly 8 oz. (0.227 kg)

EF = Exposure Frequency -52 weeks/year

*ED = Exposure Duration - 26 years

AF = Absorption Factor - 1.0 (total absorption)

*BW = Body Weight -154 lbs. (70 kg)

*ATnc = Averaging Time -1,560 weeks/26 years for noncarcinogenic (nc) effects

* Note: Advisory determinations were based on a 154 lb. (70 kg) consumer ingesting 8 oz. (0.227 kg) weekly meal portions over a 26 year exposure duration. Carcinogenic effects are still averaged over a lifetime of 70 years (3,640 weeks) because it is assumed cancer can develop at any time during one's lifetime, even after the exposure to the carcinogen has ended.

Risk Characterization

Intakes estimated in the previous step are then compared to published toxicity values for each contaminant identified. As mentioned previously, the toxicity value utilized to assess adverse noncarcinogenic effects is the oral Reference Dose (RfD). The intake is divided by this value to determine a Hazard Quotient (HQ) for the contaminant.

$$\text{Hazard Quotient (HQ)} = \text{Intake (mg/kg-day)}/\text{RfD (mg/kg-day)}$$

If more than one contaminant is present in the fish tissue, the HQs are summed to derive a Hazard Index (HI). If the HI is less than 1.0, then adverse noncarcinogenic effects are not anticipated. If the HI equals or exceeds 1.0, an advisory is issued.

For a contaminant that may also be associated with a Cancer Risk (CR), the estimated intake is multiplied by its specific Cancer Slope Factor (see Table 4).

$$\text{Cancer Risk (CR)} = \text{Intake (mg/kg-day)} \times \text{CSF (mg/kg-day)}^{-1}$$

The resulting CR estimate represents the probability of an individual developing cancer during their lifetime as a result of exposure to the potential carcinogen. Risk estimates are summed if more than one potential carcinogen is present in fish tissue. Advisories are issued if the estimated CR equals or exceeds 0.0001 (1 in 10,000). The current CR estimate for women in the United States for all cancer types is 1 in 3 and for men is 1 in 2 (ACS, 2010).

While mercury (methylmercury) is a contaminant accounted for in the HI, Nebraska also utilizes a fish tissue residue criterion (TRC) in place of a water column criterion for the protection of human health. This criterion was established based on the EPA's risk-based equation (EPA, 2001) calculated as:

$$TRC = \frac{BW \times RfD}{FI}, \quad \text{where}$$

TRC = "fish" tissue residue criterion in mg/kg

BW = body weight: 154 lbs. (70 kg)

RfD = reference dose of 0.0001 mg/kg body weight/day

FI = fish intake: 8 oz. (0.227 kg) weekly (equal to 0.0324 kg/day)

The resulting TRC represents the mercury (0.215 mg/kg) concentration in fish tissue that should not be exceeded on the basis of a consumption rate of eight ounces (0.227 kg) per week. Advisories are issued if the mercury concentration in fish tissue equals or exceeds the TRC of 0.215 mg/kg. This criterion is more stringent than EPA's recommended value of 0.30 mg/kg because Nebraska utilizes a higher consumption rate, eight ounces (0.227 kg) per week as compared to EPA's equivalence of 5.75 ounces (0.163 kg) per week.

V. CRITERIA FOR ISSUING A FISH CONSUMPTION ADVISORY

Authority

At the federal level, both the Food and Drug Administration (FDA) and EPA have jurisdictional authority and roles relating to the regulation and control of toxic or deleterious substances in fish and shellfish. The Federal Food, Drug, and Cosmetic Act (FFDCA) is the principal authority for both the FDA and EPA to take action in regulating the safety of fish as a human food source. Under the FFDCA, federal action can be taken to prevent fish that are unsafe or unfit for human consumption from moving in interstate commerce. However, federal jurisdiction does not extend to fish that are not in interstate commerce. It is left up to each state to protect the health of its citizens by controlling and regulating fish consumption from local fisheries within the state.

Under the FFDCA, the FDA regulation of contaminants has proceeded through the use of action levels that serve as guidance in evaluating contaminants in fish. However, these levels may not be appropriate for states to use in regulating the consumption of contaminated fish since action levels are based on national needs and national fish consumption rates, and consumption rates by local fishermen may not reflect national averages. The action levels also considered economic impacts to commercial industries when they were developed.

In Nebraska, the NDHHS has primary responsibility for issuing public health advisories. Because fish consumption advisories involve other agencies, the NDHHS will issue advisories in collaboration with the NDEE, NGPC, and NDA.

Health Risk Assessment Method

The EPA's risk assessment methods (EPA, 1989) were used in this report to assess potential human health risks from exposure to contaminants in fish tissue. When the estimated cancer risk equals or exceeds 0.0001 (≥ 1 in 10,000) or when adverse noncancer health effects may be possible from ingesting fish (Hazard Index ≥ 1.0), advisories are issued. Advisories are also issued for mercury levels that equal or exceed 0.215 milligrams of mercury per kilogram of fish tissue.

Sampling Location Requirements

Fish tissue samples are collected annually from selected rivers and lakes in accordance with the RAFTMP's monitoring and assessment objectives, and follow Nebraska's six-year rotating basin monitoring schedule (Figure 2). Sites where previous RAFTMP sampling has revealed high levels of contaminants in fish tissue and advisories have been issued are re-sampled every six years. If conditions have improved, the advisories are removed and the site will be considered for re-sampling in the future.

Screening sites have historically been selected based on the angling pressure they receive and location within one of the targeted river basins. This approach is still followed, but since 2006 the RAFTM program has allowed for sampling of additional sites across a wider variety of resource classes (e.g., small to large streams, rivers, lake and reservoirs, including those in urban areas).

Advisory Criteria

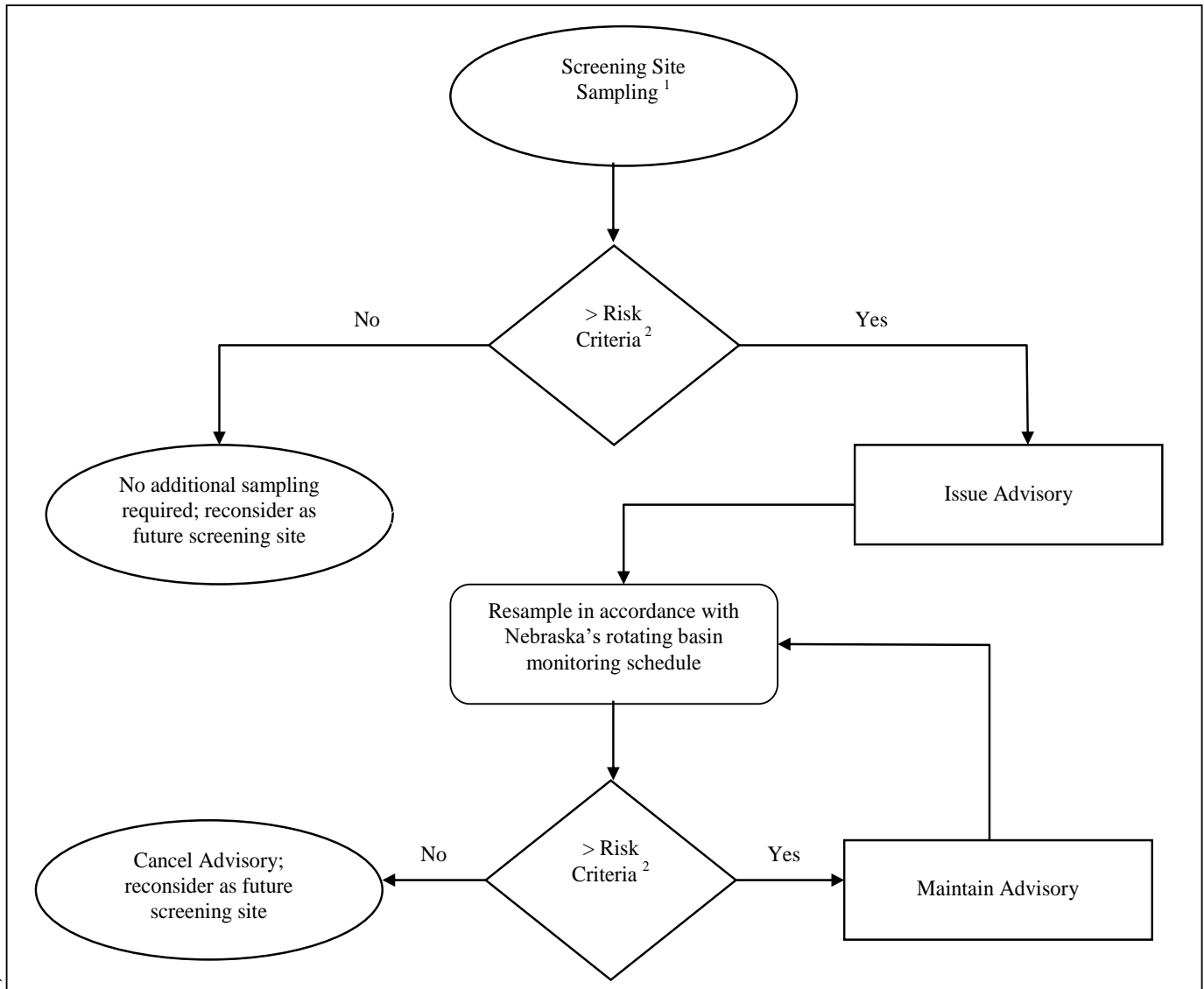
The public is made aware of health risks through an advisory issued by the NDHHS and published on the NDEE and NGPC websites. Advisories are issued for specific waterbodies when fish tissue analyzed (fillets and/or biopsy plugs from 3-5 fish samples of a single species) are found to:

- 1) have mercury concentrations ≥ 0.215 mg/kg; or
- 2) when ingested may be associated with adverse health effects, a Hazard Index (summation of Hazard Quotients) ≥ 1.0 ; or
- 3) when ingested may be associated with an excess Cancer Risk ≥ 1 in 10,000.

Although advisories are issued for only the fish species analyzed, it should be noted that other species of fish inhabiting the same waterbody, may bioconcentrate similar levels of contaminants. In rivers and streams, advisory issuances are for segments of that waterbody as defined in Title 117 – Nebraska Surface Water Quality Standards (NDEQ, 2019). Stream segments define specific portions of streams which are relatively homogeneous in regard to their physical conditions (e.g., flow, temperature, substrate, channel characteristics) (NDEQ, 1992). Advisory issuances for lakes/reservoirs always pertain to the entire waterbody. The fish species analyzed and risk criteria violated are listed in the advisory.

Once an advisory is issued for a waterbody it will remain in effect until additional sampling of that same fish species indicates that a health concern no longer exists. If a sample collected from an advisory waterbody exceeds risk criteria, the advisory will remain in effect for at least another six years, or until it is re-sampled. This process will repeat itself if the samples continue to exceed criteria. If the single fillet/biopsy plug sample collected from an advisory waterbody is below risk criteria, then the advisory will be removed. Figure 3 provides a diagram of the processes involved in assigning and removing fish consumption advisories in Nebraska.

Figure 3. Monitoring Scheme for the Nebraska Fish Tissue Monitoring Program.



¹ Sampling scheme applies to all screening and advisory sites; single fillet/biopsy plug sample – comprised of 3-5 fish/sample of a single species – often >5 fish/sample are necessary for bluegill, crappie, etc., due to size.

² The *Risk Criteria* established by the Nebraska Fish Tissue Advisory Committee include fish tissue that: (1) are found to have mercury concentrations ≥ 0.215 mg/kg, (2) have contaminant concentrations that may be associated with adverse health effects (Hazard Index ≥ 1.0) or (3) may be associated with an excess Cancer Risk ≥ 1 in 10,000 when ingested.

VI. RESULTS AND DISCUSSION

2021 Sampling Effort and Purpose

RAFTMP sampling is conducted to examine trends in fish tissue contamination and to identify potential human health concerns associated with fish consumption. In 2021, the NDEE collected a total of 114 samples from 56 locations. Thirty-eight sites were in the Lower Platte River basin (Figure 1) and eighteen in the Nemaha River basin. At the 31 advisory and 25 screening sites sampled, tissue samples from one to four species were collected depending on what could be obtained (See Table 1). In all, fish were collected from 10 different streams/ivers with one or more sampling locations and 46 lakes/reservoirs.

Contaminants of Concern

Methylmercury and PCBs continue to be the contaminants of primary concern in Nebraska fish. Since fish are an important part of a healthy diet and the public are encouraged to consume them, it is also important to protect individuals from consuming large quantities of fish that have high contaminant levels. The health impacts of ingestion of methylmercury and PCBs are discussed below.

Methylmercury – Mercury occurs naturally at low levels in rocks, soil, sediments, air, and water. In addition, mercury can be released into the environment from mining operations, sanitary landfills, fossil fuel combustion, municipal refuse incineration, industrial waste discharges, and from certain fungicides. Mercury occurs in aquatic systems in three forms: elemental (metallic), organic (methylated), and inorganic (mercurous and mercuric salts) compounds. The organic form, methylmercury (Me-Hg), is the most toxic to both aquatic organisms and humans. In the environment, elemental mercury is oxidized to inorganic mercury that is then converted into Me-Hg by certain microorganisms. Mercury poses a threat to humans as it is stored in the tissues of aquatic organisms in the methylated form (EPA, 1995). Fish absorb Me-Hg from aquatic organisms they eat, and from the water passing over their gills. Predacious fish such as walleye, northern pike, and largemouth bass reside at the top of the aquatic food chain and are prone to exhibiting higher Me-Hg concentrations than less predacious fish such as carp or suckers. Long-term exposure, even to small background concentrations, will lead to higher concentrations in the flesh. Therefore, large fish typically have higher mercury concentrations than small fish.

Exposure to high levels of mercury have been shown to adversely affect developing nervous system (EPA, 2001). Women of child-bearing age, pregnant women, and children less than 15 years of age are the targeted population of concern. Although mercury is included in the calculation of the Hazard Index because of its prevalence in the environment and the adverse effects that may be associated with exposure, the State has adopted an action level of 0.215 mg/kg for mercury (NDEQ, 2019). Currently, there are no known methods by which one can effectively reduce mercury levels in fish tissue.

Polychlorinated Biphenyls (PCBs) – PCBs are a class of aromatic organic compounds that were produced and marketed in the United States beginning in 1929. PCBs are represented by a group of 209 individual chemical compounds referred to as congeners. Prior to 1971, PCBs were used as plasticizers, heat transfer fluids, hydraulic fluids, lubricants, and wax extenders. Since 1971, PCBs have been limited to use in closed electrical systems such as capacitors and transformers because of their insulating properties. Although PCB production was discontinued in the U.S. in 1977, PCBs are still present in old transformers and capacitors. Virtually insoluble in water, PCB compounds are readily soluble in lipids and are stored in areas such as the liver, fat, breast milk, and skin. Bioconcentration factors for fish have been documented to occur from 3,000 to 247,000 times ambient levels (EPA, 1980).

Commercially, PCBs were sold as mixtures of individual congeners; most of these mixtures were sold under the trade name Aroclor. Aroclor PCB mixtures may consist of over one hundred individual congeners and are named based on the amount of chlorine in them. As the chlorine content increases, the compound becomes more stable and becomes increasingly difficult to break down.

It is the highly chlorinated PCB congeners which are more readily detected in fish tissue samples due to their persistence in the environment. Nebraska analyzes PCBs for three congeners - PCB-1248, 1254, and 1260. PCB-1260 is the most highly chlorinated congener and PCB-1248 is the least chlorinated. PCB-1254 and 1260 are the most frequently detected in Nebraska fish.

Since PCBs are stored in a fish's fatty tissue and organs, there are effective means by which consumers can reduce their PCB intake. The best approach is to trim away all visible fat from the fillet, and grill, broil, or bake the fillets in such a way that any remaining fat is allowed to drain or drip away.

Risk Assessment Results

Table 5 summarizes the findings of the 2021 Regional Ambient Fish Tissue analysis. This includes the 2021 screening and previous advisory site locations. Table 5 also highlights the sample locations, the fish species collected, and shows where Nebraska Risk Criteria were exceeded (bold text).

Table 5. Fish Tissue Risk Assessment Results for Nebraska Streams and Lakes Monitored in 2021.

WATERBODY	WATER-BODY ID	COUNTY	FISH SPECIES	CANCER RISK (≥0.0001)	HAZARD INDEX (≥1.0)	MERCURY CONC. (≥0.215 mg/kg)
PREVIOUS ADVISORY LOCATIONS						
Redtail Lake	LP2-L0280	Butler	Largemouth Bass ^{1,2}	NA	NA	0.477
			Bluegill ^{1,2}	NA	NA	0.126
Homestead Lake	LP1-L0335	Butler	Largemouth Bass ^{1,2}	NA	NA	0.164
			Bluegill ^{1,2}	NA	NA	0.083
			Channel Catfish ²	NA	NA	0.040
Timber Point Lake	LP2-L0250	Butler	Largemouth Bass ^{1,2}	NA	NA	1.310
			Bluegill ²	NA	NA	0.014
Platte River	LP1-10000	Cass	Channel Catfish ^{1,5}	<0.0001	<1.0	0.051
			Flathead Catfish ²	NA	NA	0.213
			Common Carp ²	NA	NA	0.201
Fremont Lake No. 20E - SRA	LP1-L0250	Dodge	Largemouth Bass ^{1,2}	NA	NA	0.129
			Bluegill ²	NA	NA	0.109
Wirth Brothers Lake	NE3-L0045	Johnson	Largemouth Bass ^{1,2}	NA	NA	0.900
			Black Crappie ^{1,2}	NA	NA	0.531
			Bluegill ²	NA	NA	0.318
Oak Creek	LP2-20500	Lancaster	Channel Catfish ^{1,2}	NA	NA	0.372
			Common Carp ²	NA	NA	0.291
Holmes Lake	LP2-L0040	Lancaster	Largemouth Bass ^{1,2}	NA	NA	0.643
			Walleye ²	NA	NA	0.768
			Bluegill ²	NA	NA	0.245
			Black Crappie ²	NA	NA	0.192
Wildwood Reservoir	LP2-L0120	Lancaster	Largemouth Bass ^{1,2}	NA	NA	0.348
			Bluegill ²	NA	NA	0.076
Merganser Lake	LP2-L0170	Lancaster	Largemouth Bass ^{1,2}	NA	NA	1.200
			Bluegill ²	NA	NA	0.195
			Channel Catfish ²	NA	NA	0.098
Yankee Hill Lake	LP2-L0090	Lancaster	Largemouth Bass ^{1,2}	NA	NA	0.700
			Bluegill ²	NA	NA	0.155
Pawnee Lake	LP2-L0160	Lancaster	Largemouth Bass ^{1,2}	NA	NA	0.028
			Walleye ²	NA	NA	0.036
			Bluegill ²	NA	NA	0.018
			Channel Catfish ²	NA	NA	0.039

1 – Advisory Species, 2 – Only Mercury Analyzed, 3 – Mercury and PCBs Analyzed, 4 – Species Not Sampled, 5 – Mercury and PCBs Analyzed, NA – Not Assessed

NOTE: Boldface type indicates risk criteria were exceeded. Values appearing in the Cancer Risk and Hazard Index columns were derived by summing the Hazard Quotients and cancer risk estimates for each contaminant found in the fish samples analyzed. Cancer risk estimates expressed as <0.0001 were below State criteria. Waterbodies where two trophic level species (i.e., bottom feeder and predator) were collected, the “predator” sample was only assessed for mercury per EPA procedures.

NOTE: The NDEE’s Policy for Issuing Fish Consumption Advisories uses an 8-oz weekly meal portion combined with a consumer body weight of 70 kg (154 lbs.), an absorption factor of 1.0 and an exposure period of 30 years for calculating health risks (NDEQ, 2011). Carcinogenic effects are still averaged over a lifetime of 70 years because it is assumed cancer can develop at any time during one’s lifetime, even after the exposure to the carcinogen has ended.

Table 5. Continued.

WATERBODY	WATER-BODY ID	COUNTY	FISH SPECIES	CANCER RISK (≥0.0001)	HAZARD INDEX (≥1.0)	MERCURY CONC. (≥0.215 mg/kg)
PREVIOUS ADVISORY LOCATIONS – CON'T						
Cottontail Lake	LP2-L0070	Lancaster	Largemouth Bass ^{1,2}	NA	NA	1.090
			Channel Catfish ²	NA	NA	0.217
Olive Creek Lake	LP2-L0140	Lancaster	Largemouth Bass ^{1,2}	NA	NA	0.354
			Bluegill ²	NA	NA	0.090
Wild Plum Lake	LP2-L0200	Lancaster	Largemouth Bass ^{1,2}	NA	NA	0.427
			Bluegill ²	NA	NA	0.079
			White Crappie ²	NA	NA	0.717
Bowling Lake	LP2-L0100	Lancaster	Largemouth Bass ^{1,2}	NA	NA	0.617
			Bluegill ²	NA	NA	0.086
Hedgefield Lake - WMA	LP2-L0020	Lancaster	Largemouth Bass ^{1,2}	NA	NA	0.588
Auburn Rotary Club Lake	NE3-L0010	Nemaha	Largemouth Bass ^{1,2}	NA	NA	0.200
			Channel Catfish ²	NA	NA	0.023
			Black Crappie ²	NA	NA	0.128
Steinart Park Lake	NE1-L0010	Otoe	Largemouth Bass ^{1,2}	NA	NA	0.220
			Bluegill Hybrid ²	NA	NA	0.037
Wilson Creek 2X - WMA	NE3-L0040	Otoe	Largemouth Bass ^{1,2}	NA	NA	0.591
			Black Crappie ^{1,4}	NA	NA	NA
			Bluegill ²	NA	NA	0.212
Missouri River	NE1-10000	Otoe	Flathead Catfish ^{1,2}	NA	NA	0.212
Prairie Knoll Lake	NE2-L0080	Pawnee	Largemouth Bass ^{1,2}	NA	NA	0.435
			Bluegill ²	NA	NA	0.049
Iron Horse Trail Lake	NE2-L0090	Pawnee	Largemouth Bass ^{1,2}	NA	NA	0.795
			Bluegill ²	NA	NA	0.123
			Black Crappie ²	NA	NA	0.230
Burchard Lake	NE2-L0120	Pawnee	Largemouth Bass ^{1,2}	NA	NA	0.344
			Bluegill ²	NA	NA	0.212
Mayberry WMA Lake	NE2-L0195	Pawnee	Largemouth Bass ^{1,2}	NA	NA	0.358
			Bluegill ²	NA	NA	0.174
Lake Babcock	LP1-L0450	Platte	Common Carp ^{1,2}	NA	NA	0.227
			Channel Catfish ²	NA	NA	0.067

1 – Advisory Species, 2 – Only Mercury Analyzed, 3 – Mercury and PCBs Analyzed, 4 – Species Not Sampled, 5 – Mercury and PCBs Analyzed, NA – Not Assessed

NOTE: Boldface type indicates risk criteria were exceeded. Values appearing in the Cancer Risk and Hazard Index columns were derived by summing the Hazard Quotients and cancer risk estimates for each contaminant found in the fish samples analyzed. Cancer risk estimates expressed as <0.0001 were below State criteria. Waterbodies where two trophic level species (i.e., bottom feeder and predator) were collected, the “predator” sample was only assessed for mercury per EPA procedures.

NOTE: The NDEE’s Policy for Issuing Fish Consumption Advisories uses an 8-oz weekly meal portion combined with a consumer body weight of 70 kg (154 lbs.), an absorption factor of 1.0 and an exposure period of 30 years for calculating health risks (NDEQ, 2011). Carcinogenic effects are still averaged over a lifetime of 70 years because it is assumed cancer can develop at any time during one’s lifetime, even after the exposure to the carcinogen has ended.

Table 5. Continued.

WATERBODY	WATER-BODY ID	COUNTY	FISH SPECIES	CANCER RISK (≥0.0001)	HAZARD INDEX (≥1.0)	MERCURY CONC. (≥0.215 mg/kg)
PREVIOUS ADVISORY LOCATIONS – CON'T						
Kirkman's Cove Lake	NE2-L0040	Richardson	Largemouth Bass ^{1,4}	NA	NA	NA
			Common Carp ^{1,2}	NA	NA	0.140
			Channel Catfish ²	NA	NA	0.035
Memphis Lake	LP2-L0010	Saunders	Largemouth Bass ^{1,2}	NA	NA	0.148
			Channel Catfish ²	NA	NA	0.050
Czechland Lake	LP2-L0270	Saunders	Largemouth Bass ^{1,2}	NA	NA	0.355
			Bluegill ²	NA	NA	0.072
Red Cedar Lake	LP2-L0190	Saunders	Largemouth Bass ^{1,2}	NA	NA	0.738
			Bluegill Hybrid ²	NA	NA	0.206
Lake Wanahoo	LP2-L0015	Saunders	Largemouth Bass ^{1,2}	NA	NA	0.340
			Bluegill ²	NA	NA	0.172
Meadowlark Lake	LP2-L0220	Seward	Largemouth Bass ^{1,2}	NA	NA	0.262
			Bluegill ^{1,2}	NA	NA	0.158
			Black Crappie ²	NA	NA	0.083
SCREENING LOCATIONS						
Weeping Water City Lake	NE1-L0020	Cass	Largemouth Bass ²	NA	NA	0.130
			Bluegill ²	NA	NA	0.051
Louisville Lake No. 2 - SRA	LP1-L0030	Cass	Largemouth Bass ²	NA	NA	0.104
			Bluegill ²	NA	NA	0.115
Salt Creek	LP2-10000	Cass	Common Carp ²	NA	NA	0.066
Weeping Water Creek	NE1-12800	Cass	Common Carp ²	NA	NA	0.032
Louisville Lake No. 3 - SRA	LP1-L0040	Cass	Largemouth Bass ²	NA	NA	0.533
			Bluegill ²	NA	NA	0.325
Fremont Lake No. 15 - SRA	LP1-L0200	Dodge	Largemouth Bass ²	NA	NA	0.030
			Channel Catfish ²	NA	NA	0.042
Fremont Lake No. 12 - SRA	LP1-L0180	Dodge	Largemouth Bass ²	NA	NA	0.076
Wagon Train Lake	LP2-L0030	Lancaster	Largemouth Bass ²	NA	NA	0.170
			Bluegill ²	NA	NA	0.045
Stagecoach Lake	LP2-L0050	Lancaster	Largemouth Bass ²	NA	NA	0.460

1 – Advisory Species, 2 – Only Mercury Analyzed, 3 – Mercury and PCBs Analyzed, 4 – Species Not Sampled, 5 – Mercury and PCBs Analyzed, NA – Not Assessed

NOTE: Boldface type indicates risk criteria were exceeded. Values appearing in the Cancer Risk and Hazard Index columns were derived by summing the Hazard Quotients and cancer risk estimates for each contaminant found in the fish samples analyzed. Cancer risk estimates expressed as <0.0001 were below State criteria. Waterbodies where two trophic level species (i.e., bottom feeder and predator) were collected, the “predator” sample was only assessed for mercury per EPA procedures.

NOTE: The NDEE’s Policy for Issuing Fish Consumption Advisories uses an 8-oz weekly meal portion combined with a consumer body weight of 70 kg (154 lbs.), an absorption factor of 1.0 and an exposure period of 26 years for calculating health risks (NDEQ, 2011). Carcinogenic effects are still averaged over a lifetime of 70 years because it is assumed cancer can develop at any time during one’s lifetime, even after the exposure to the carcinogen has ended.

Table 5. Continued.

WATERBODY	WATER-BODY ID	COUNTY	FISH SPECIES	CANCER RISK (≥0.0001)	HAZARD INDEX (≥1.0)	MERCURY CONC. (≥0.215 mg/kg)
SCREENING LOCATIONS - CON'T						
Bluestem Lake	LP2-L0110	Lancaster	Largemouth Bass ²	NA	NA	0.414
			Channel Catfish ²	NA	NA	0.090
Conestoga Lake	LP2-L0130	Lancaster	Largemouth Bass ²	NA	NA	0.400
Branched Oak Lake	LP2-L0150	Lancaster	Largemouth Bass ²	NA	NA	0.252
			Bluegill ²	NA	NA	0.028
			Channel Catfish ²	NA	NA	0.058
			Walleye ²	NA	NA	0.058
Little Salt Creek	LP2-20300	Lancaster	Channel Catfish ²	NA	NA	0.200
Antelope Creek	LP2-20900	Lancaster	Green Sunfish ²	NA	NA	0.100
Duck Lake	NE1-L0007	Nemaha	Largemouth Bass ²	NA	NA	0.325
			Bluegill ²	NA	NA	0.083
Pawnee City Lake	NE2-L0100	Pawnee	Largemouth Bass ²	NA	NA	0.123
			Hybrid Bluegill ²	NA	NA	0.041
Lake North	LP1-L0440	Platte	Walleye ²	NA	NA	0.132
			White Crappie ²	NA	NA	0.157
Shell Creek	LP1-20700	Platte	Channel Catfish ²	NA	NA	0.054
Verdon Lake	NE2-L0020	Richardson	Largemouth Bass ²	NA	NA	0.259
			Bluegill ²	NA	NA	0.029
Stanton Lake	NE2-L0010	Richardson	Largemouth Bass ²	NA	NA	0.112
			Bluegill ²	NA	NA	0.040
Big Nemaha River	NE2-10000	Richardson	Channel Catfish ²	NA	NA	0.121
North Fork Big Nemaha River	NE2-12200	Richardson	Channel Catfish ²	NA	NA	0.141
Wahoo Creek	LP2-10100	Saunders	Common Carp ²	NA	NA	0.092
East Twin Lake	LP2-L0240	Seward	Walleye ²	NA	NA	0.105
			White Crappie ²	NA	NA	0.065
			Largemouth Bass ²	NA	NA	0.396

1 – Advisory Species, 2 – Only Mercury Analyzed, 3 – Mercury and PCBs Analyzed, 4 – Species Not Sampled, 5 – Mercury and PCBs Analyzed, NA – Not Assessed

NOTE: Boldface type indicates risk criteria were exceeded. Values appearing in the Cancer Risk and Hazard Index columns were derived by summing the Hazard Quotients and cancer risk estimates for each contaminant found in the fish samples analyzed. Cancer risk estimates expressed as <0.0001 were below State criteria. Waterbodies where two trophic level species (i.e., bottom feeder and predator) were collected, the “predator” sample was only assessed for mercury per EPA procedures.

NOTE: The NDEE’s Policy for Issuing Fish Consumption Advisories uses an 8-oz weekly meal portion combined with a consumer body weight of 70 kg (154 lbs.), an absorption factor of 1.0 and an exposure period of 26 years for calculating health risks (NDEQ, 2011). Carcinogenic effects are still averaged over a lifetime of 70 years because it is assumed cancer can develop at any time during one’s lifetime, even after the exposure to the carcinogen has ended.

VII. SUMMARY

A list of Nebraska streams and lakes monitored in 2021 with an advisory status change are presented in Table 6. A summary of the 2021 risk assessment results are as follows:

1. Fish tissue samples were collected and analyzed from 24 screening sites. Tissue samples collected from 17 sites did not exceed any of the State's risk criteria and will not come under advisory.
2. Samples collected at 8 screening sites exceeded the risk criteria for mercury.
3. Thirty-two advisory sites were also monitored in 2021. Advisories will be maintained at of the 25 sites based on contaminant levels still exceeding risk criteria.
4. Seven sites exceeded the risk criteria for mercury in two or more species.
5. In all, 8 new waterbodies monitored in 2021 will come under advisory, 25 sites that were already under an advisory remained listed, and seven sites were removed.
6. Combined with previous year's assessment, 137 Nebraska waterbodies (seven stream segments and 130 lakes) are now under a fish consumption advisory (refer to *Appendix A* for the complete list of advisory sites and location maps).

Table 6. List of Waterbodies with an Advisory Status Change for 2021.

WATERBODY	WATER-BODY ID	COUNTY	FISH SPECIES	ADVISORY ACTION	LISTING REASON ¹
ADVISORY LOCATIONS					
Homestead Lake	LP1-L0335	Butler	Largemouth Bass ² / Bluegill ²	Remove	<Risk Criteria
Platte River	LP1-10000	Cass	Channel Catfish ²	Remove	<Risk Criteria
Fremont Lake No. 20E - SRA	LP1-L0250	Dodge	Largemouth Bass ²	Remove	<Risk Criteria
Wirth Brothers Lake	NE3-L0045	Johnson	Largemouth Bass ¹ / Black Crappie ¹ / Bluegill ^{1,3}	Maintain mercury advisory for Largemouth Bass, Black Crappie, and add Bluegill	Mercury
Pawnee Lake	LP2-L0160	Lancaster	Largemouth Bass ²	Remove	<Risk Criteria
Oak Creek	LP2-20500	Lancaster	Common Carp ¹ / Channel Catfish ^{1,3} / White Crappie ²	Maintain mercury advisory for Common Carp, add Channel Catfish, and remove White Crappie	Mercury

¹ Sites listed with H.I. (Hazard Index), C.R. (Cancer Risk), or Mercury had contaminant levels above human health risk criteria.

² Listed fish species had contaminant levels below human health risk criteria, is no longer present, wasn't collected, and/or in-take is considered insignificant for waterbody.

³ Additional indicator species collected and analyzed.

*Refer to *Appendix A* for the complete list of advisory sites and location maps.

Table 6. Continued

WATERBODY	WATER-BODY ID	COUNTY	FISH SPECIES	ADVISORY ACTION	LISTING REASON¹
ADVISORY LOCATIONS – CON'T					
Yankee Hill Lake	LP2-L0090	Lancaster	Largemouth Bass ¹ / Bluegill ²	Maintain mercury advisory for Largemouth Bass and remove Bluegill	Mercury
Holmes Lake	LP2-L0040	Lancaster	Largemouth Bass ¹ / Walleye ^{1,3} / Bluegill ^{1,3}	Maintain mercury advisory for Largemouth Bass, add Walleye and Bluegill	Mercury
Cottontail Lake	LP2-L0070	Lancaster	Largemouth Bass ¹ / Channel Catfish ^{1,3}	Maintain mercury advisory for Largemouth Bass and add Channel Catfish	Mercury
Meadowlark Lake	LP2-L0220	Seward	Largemouth Bass ¹ / Bluegill ²	Maintain mercury advisory for Largemouth Bass and remove Bluegill	Mercury
Missouri River	NE1-10000	Otoe	Flathead Catfish ²	Remove	<Risk Criteria
Auburn Rotary Club Lake	NE3-L0010	Nemaha	Largemouth Bass ²	Remove	<Risk Criteria
Prairie Knoll Lake	NE2-L0080	Pawnee	Largemouth Bass ¹ / Bluegill ²	Maintain mercury advisory for Largemouth Bass and remove Bluegill	Mercury
Iron Horse Trail Lake	NE2-L0090	Pawnee	Largemouth Bass ¹ / Black Crappie ^{1,3}	Maintain mercury advisory for Largemouth Bass and add Black Crappie	Mercury
Kirkman's Cove Lake	NE2-L0040	Richardson	Largemouth Bass ¹ / Common Carp ²	Maintain mercury advisory for Largemouth Bass and remove Common Carp	Mercury
Memphis Lake	LP2-L0010	Saunders	Largemouth Bass ²	Remove	<Risk Criteria
SCREENING LOCATIONS					
Louisville Lake No. 3 - SRA	LP1-L0040	Cass	Largemouth Bass ¹	New Advisory	Mercury
Stagecoach Lake	LP2-L0050	Lancaster	Largemouth Bass ¹	New Advisory	Mercury
Bluestem Lake	LP2-L0110	Lancaster	Largemouth Bass ¹	New Advisory	Mercury
Conestoga Lake	LP2-L0130	Lancaster	Largemouth Bass ¹	New Advisory	Mercury

¹ Sites listed with H.I. (Hazard Index), C.R. (Cancer Risk), or Mercury had contaminant levels above human health risk criteria.

² Listed fish species had contaminant levels below human health risk criteria, is no longer present, wasn't collected, and/or in-take is considered insignificant for waterbody.

³ Additional indicator species collected and analyzed.

*Refer to *Appendix A* for the complete list of advisory sites and location maps.

Table 6. Continued

WATERBODY	WATER-BODY ID	COUNTY	FISH SPECIES	ADVISORY ACTION	LISTING REASON¹
SCREENING LOCATIONS – CON’T					
Branched Oak Lake	LP2-L0150	Lancaster	Largemouth Bass ¹	New Advisory	Mercury
Duck Lake	NE1-L0007	Nemaha	Largemouth Bass ¹	New Advisory	Mercury
Verdon Lake	NE2-L0020	Richardson	Largemouth Bass ¹	New Advisory	Mercury
East Twin Lake	LP2-L0240	Seward	Largemouth Bass ¹	New Advisory	Mercury

¹ Sites listed with H.I. (Hazard Index), C.R. (Cancer Risk), or Mercury had contaminant levels above human health risk criteria.

² Listed fish species had contaminant levels below human health risk criteria, is no longer present, wasn't collected, and/or in-take is considered insignificant for waterbody.

³ Additional indicator species collected and analyzed.

*Refer to *Appendix A* for the complete list of advisory sites and location maps.

LITERATURE CITED

- ACS. 2010. Cancer Facts and Figures 2010. American Cancer Society.
- EPA. 1980. Ambient Water Quality Criteria for Polychlorinated Biphenyls. Office of Water Regulations and Standards. U.S. Environmental Protection Agency. Washington, D.C. 20460. EPA Document Number 440/5-80-068.
- EPA. 1989. Assessing Human Health Risks from Chemically Contaminated Fish and Shellfish: A Guidance Manual. Office of Water Regulations and Standards. U.S. Environmental Protection Agency. Washington, D.C. 20460.
- EPA. 1991. Risk Assessment Guidance for Superfund, Volume I: Human Health Evaluation Manual, Supplemental Guidance, Standard default Exposure Factors. U.S. Environmental Protection Agency. Washington, D.C. 20460.
- EPA. 1995. *Proceedings of the National Forum on Mercury in Fish*. Office of Water. Washington, D.C. 20460. EPA Document Number 823-R-95-002.
- EPA. 1999. Proceedings of the 1999 American Fisheries Society Forum on Contaminants in Fish.
- EPA. 2000. Guidance for Assessing Chemical Contaminant Data for Use in Fish Advisories. Office of Water. U.S. Environmental Protection Agency. Washington, D.C. 20460. EPA Document Number 823-B-00-008.
- EPA. 2001. Water Quality Criterion for the Protection of Human Health: Methylmercury. Office of Water. U.S. Environmental Protection Agency. Washington, D.C. 20460. EPA Document Number 823-R-01-001.
- EPA. 2009. Guidance for Implementing the January 2001 Methylmercury Water Quality Criterion. Office of Water. U.S. Environmental Protection Agency. Washington, D.C. 20460. EPA Document Number 823-R-09-002.
- EPA. 2021a. Integrated Risk Information System (IRIS) database. Online. (<http://www.epa.gov/IRIS/>).
- EPA. 2021b. Regional Screening Levels for Chemical Contaminants. U.S. Environmental Protection Agency – Pacific Southwest, Region 9. Online. (<http://www.epa.gov/region9/superfund/prg/>).
- NDEQ. 1992. Nebraska Stream Inventory. Nebraska Department of Environmental Quality. Lincoln, NE 68509
- NDEQ. 2011. Policy for Issuing Nebraska Fish Consumption Advisories. Nebraska Department of Environmental Quality. Lincoln, NE 68509.
- NDEQ. 2019. Title 117 – Nebraska Surface Water Quality Standards. Nebraska Department of Environmental Quality. Lincoln, NE 68509.

APPENDIX A

NEBRASKA FISH CONSUMPTION ADVISORIES THROUGH 2020

Important Note: Fish consumption advisories are not bans on eating fish, rather they provide information on the potential risks associated with the consumption of specified fish from certain waterbodies. Nebraska's *Risk Criteria* for issuing fish consumption advisories are based on an 8-oz weekly fillet meal portion combined with a consumer body weight of 70 kg (154 lbs), assuming 100% contaminant absorption, and an exposure period of 26 years (see maps below).

MAP I.D. #	WATERBODY	ID	FISH TYPE	HEALTH RISK CRITERIA VIOLATED ¹	POLLUTANT OF CONCERN
BIG BLUE RIVER BASIN					
1	Oxbow Trails Reservoir	BB4-L0035	Largemouth Bass / Bluegill / Black Crappie	Mercury	Mercury
2	Lake Hastings	BB3-L0050	Common Carp	Cancer Risk, Hazard Index	PCBs, Mercury
3	Big Indian Reservoir	BB1-L0030	Largemouth Bass	Mercury	Mercury
4	Pioneer Trail Lake	BB4-L0040	Largemouth Bass / Bluegill	Mercury	Mercury
5	Walnut Creek #2	BB1-L0100	Largemouth Bass / Bluegill	Mercury	Mercury
6	Swanton Lake (Swan Lake 67)	BB2-L0005	Largemouth Bass	Mercury	Mercury
7	Willard L. Meyer (Swan Creek Lake 5A)	BB2-L0020	Largemouth Bass	Mercury	Mercury
8	Wolf-Wildcat Lake	BB1-L0050	Largemouth Bass / Bluegill	Mercury	Mercury
9	Cub Creek 9B (Leisure Lake)	BB1-L0070	Largemouth Bass	Mercury	Mercury
ELKHORN RIVER BASIN					
10	Goose Lake	EL4-L0050	Largemouth Bass	Mercury	Mercury
11	West Point City Lake	EL1-L0060	Largemouth Bass	Mercury	Mercury
12	Atkinson Lake	EL4-L0070	Largemouth Bass	Mercury	Mercury
13	Maskenthine Lake	EL1-L0080	Largemouth Bass / Bluegill	Mercury	Mercury
14	Maple Creek Recreation Area Lake	EL1-L0095	Largemouth Bass	Mercury	Mercury
LITTLE BLUE RIVER BASIN					
15	Crystal Springs NW Lake	LB1-L0020	Largemouth Bass	Mercury	Mercury
16	Lone Star Reservoir	LB1-L0050	Largemouth Bass / Bluegill	Mercury	Mercury
17	Big Sandy Creek	LB2-10200	Channel Catfish	Hazard Index, Mercury	Mercury
18	Liberty Cove	LB2-L0050	Largemouth Bass / Bluegill / Black Crappie	Mercury	Mercury
19	Little Blue River	LB1-10000	Channel Catfish	Mercury	Mercury
LOUP RIVER BASIN					
20	Columbus City Park Pond	LO1-L0010	Largemouth Bass	Mercury	Mercury
21	North Loup SRA Lake	LO2-L0010	Largemouth Bass	Mercury	Mercury
22	Davis Creek Lake	LO2-L0015	Common Carp / White Bass	Mercury	Mercury
23	Calamus Reservoir	LO2-L0050	Common Carp	Mercury	Mercury
24	Frye Lake - WMA	LO3-L0070	Largemouth Bass	Mercury	Mercury
25	Ansley City Lake	LO4-L0030	Largemouth Bass	Mercury	Mercury
26	Melham Park Lake	LO4-L0040	Largemouth Bass	Mercury	Mercury

¹ The Risk Criteria established by the Nebraska Fish Tissue Advisory Committee include fish tissue that: (1) are found to have mercury concentrations > 0.215 mg/kg, (2) have contaminant concentrations that may be associated with adverse health effects (Hazard Index > 1.0) or (3) may be associated with an excess Cancer Risk > 1 in 10,000 when ingested.

APPENDIX A – Continued

MAP I.D. #	WATERBODY	ID	FISH TYPE	HEALTH RISK CRITERIA VIOLATED¹	POLLUTANT OF CONCERN
LOUP RIVER BASIN - CON'T					
27	Arnold Lake	LO4-L0050	Largemouth Bass	Mercury	Mercury
28	Pressey Pond - WMA	LO4-L0045	Largemouth Bass	Mercury	Mercury
29	Pibel Lake	LO1-L0130	Largemouth Bass	Mercury	Mercury
30	Ravenna Lake	LO4-L0010	Largemouth Bass	Mercury	Mercury
31	Sherman Reservoir	LO3-L0020	White Bass / Largemouth Bass / Walleye	Mercury	Mercury
LOWER PLATTE RIVER BASIN					
32	Louisville Lake No. 3 - SRA	LP1-L0040	Largemouth Bass / Bluegill	Mercury	Mercury
33	Two Rivers Lake No. 1 - SRA	LP1-L0130	Largemouth Bass	Mercury	Mercury
34	Fremont Lake No. 11 - SRA	LP1-L0210	Largemouth Bass	Mercury	Mercury
35	Fremont Lake No. 1	LP1-L0290	Largemouth Bass	Mercury	Mercury
36	Lake Babcock	LP1-L0450	Common Carp	Mercury	Mercury
37	Lake Wanahoo	LP2-L0015	Largemouth Bass	Mercury	Mercury
38	Hedgefield Lake - WMA	LP2-L0020	Largemouth Bass	Mercury	Mercury
39	Holmes Lake	LP2-L0040	Largemouth Bass / Walleye / Bluegill	Mercury	Mercury
40	Stagecoach Lake	LP2-L0050	Largemouth Bass	Mercury	Mercury
41	Cottontail Lake	LP2-L0070	Largemouth Bass	Mercury	Mercury
42	Yankee Hill Lake	LP2-L0090	Largemouth Bass / Bluegill	Mercury	Mercury
43	Bowling Lake	LP2-L0100	Largemouth Bass	Mercury	Mercury
44	Bluestem Lake	LP2-L0110	Largemouth Bass	Mercury	Mercury
45	Conestoga Lake	LP2-L0130	Largemouth Bass	Mercury	Mercury
46	Olive Creek Lake	LP2-L0140	Largemouth Bass	Mercury	Mercury
47	Branched Oak Lake	LP2-L0150	Largemouth Bass	Mercury	Mercury
48	Merganser Lake	LP2-L0170	Largemouth Bass	Mercury	Mercury
49	Red Cedar Lake	LP2-L0190	Largemouth Bass	Mercury	Mercury
50	Wild Plum Lake	LP2-L0200	Largemouth Bass / White Crappie	Mercury	Mercury
51	Meadowlark Lake	LP2-L0220	Largemouth Bass / Bluegill	Mercury	Mercury
52	East Twin Lake	LP2-L0240	Largemouth Bass	Mercury	Mercury
53	Timber Point Lake	LP2-L0250	Largemouth Bass	Mercury	Mercury
54	Czechland Lake	LP2-L0270	Largemouth Bass	Mercury	Mercury
55	Redtail Lake	LP2-L0280	Largemouth Bass	Mercury	Mercury
56	Oak Creek	LP2-20500	Common Carp / Channel Catfish	Mercury	Mercury
57	Wildwood Reservoir	LP2-L0120	Largemouth Bass	Mercury	Mercury
MIDDLE PLATTE RIVER BASIN					
58	Mormon Island Middle Lake - SRA	MP2-L0060	Largemouth Bass	Mercury	Mercury
59	L.E. Ray Lake	MP2-L0030	Largemouth Bass	Mercury	Mercury
60	Wax Axe Lake - SRA	MP2-L0120	Smallmouth Bass	Mercury	Mercury
61	Windmill State Park Lake # 1	MP2-L0170	Largemouth Bass	Mercury	Mercury

¹ The Risk Criteria established by the Nebraska Fish Tissue Advisory Committee include fish tissue that: (1) are found to have mercury concentrations > 0.215 mg/kg, (2) have contaminant concentrations that may be associated with adverse health effects (Hazard Index > 1.0) or (3) may be associated with an excess Cancer Risk > 1 in 10,000 when ingested.

APPENDIX A – Continued

MAP I.D. #	WATERBODY	ID	FISH TYPE	HEALTH RISK CRITERIA VIOLATED¹	POLLUTANT OF CONCERN
MIDDLE PLATTE RIVER BASIN - CON'T					
62	Bassway Strip Lake No. 5	MP2-L0190	Largemouth Bass	Mercury	Mercury
63	Fort Kearny Lake # 5 (SRA)	MP2-L0290	Largemouth Bass	Mercury	Mercury
64	Kea Lake - WMA	MP2-L0320	Largemouth Bass	Mercury	Mercury
65	Kea West Lake - WMA	MP2-L0340	Largemouth Bass	Mercury	Mercury
66	Cottonmill Lake	MP2-L0360	Largemouth Bass	Mercury	Mercury
67	Union Pacific Lake - SRA	MP2-L0390	Largemouth Bass	Mercury	Mercury
68	Pawnee Slough Lake	MP2-L0795	Largemouth Bass	Mercury	Mercury
69	Johnson Lake	MP2-L0520	White Bass	Mercury	Mercury
70	Elwood Reservoir	MP2-L0540	Largemouth Bass / Walleye	Mercury	Mercury
71	Gallager Canyon Reservoir (SRA)	MP2-L0570	Largemouth Bass	Mercury	Mercury
72	Jeffery Reservoir	MP2-L0710	Largemouth Bass	Mercury	Mercury
73	West Brady Lake (WMA)	MP2-L0720	Largemouth Bass	Mercury	Mercury
74	Maxwell Rest Stop NDOT Lake	MP2-L0750	Largemouth Bass	Mercury	Mercury
75	Crystal Lake	MP2-L0820	Largemouth Bass	Mercury	Mercury
76	East Odessa Lake (WMA)	MP2-L0380	Largemouth Bass	Mercury	Mercury
77	Archway Pond #1	MP2-LXXXX	Largemouth Bass / Bluegill	Mercury	Mercury
78	Fort McPherson Lake	MP2-L0770	Largemouth Bass	Mercury	Mercury
MISSOURI TRIBUTARIES RIVER BASIN					
79	Lawrence Youngman Lake	MT1-L0067	Largemouth Bass / Black Crappie	Mercury	Mercury
80	Offutt Lake	MT1-L0010	Largemouth Bass / Smallmouth Bass	Mercury	Mercury
81	Walnut Creek Lake	MT1-L0025	Largemouth Bass	Mercury	Mercury
82	Prairie Queen Lake	MT1-L0027	Largemouth Bass	Mercury	Mercury
83	Wehrspann Lake	MT1-L0030	Largemouth Bass	Mercury	Mercury
84	Standing Bear Lake	MT1-L0100	Largemouth Bass / Black Crappie	Mercury	Mercury
85	Glenn Cunningham Lake	MT1-L0120	Largemouth Bass	Mercury	Mercury
86	Prairie View Lake	MT1-L0135	Largemouth Bass	Mercury	Mercury
87	Summit Lake	MT1-L0150	Largemouth Bass	Mercury	Mercury
88	Buckskin Hills Lake	MT2-L0010	Largemouth Bass	Mercury	Mercury
NEMAHA RIVER BASIN					
89	Duck Lake	NE1-L0007	Largemouth Bass	Mercury	Mercury
90	Steinart Park Lake	NE1-L0010	Largemouth Bass	Mercury	Mercury
91	Verdon Lake	NE2-L0020	Largemouth Bass	Mercury	Mercury
92	Kirkman's Cove Lake	NE2-L0040	Largemouth Bass	Mercury	Mercury

¹ The *Risk Criteria* established by the Nebraska Fish Tissue Advisory Committee include fish tissue that: (1) are found to have mercury concentrations ≥ 0.215 mg/kg, (2) have contaminant concentrations that may be associated with adverse health effects (Hazard Index ≥ 1.0) or (3) may be associated with an excess Cancer Risk ≥ 1 in 10,000 when ingested.

APPENDIX A – Continued

MAP I.D. #	WATERBODY	ID	FISH TYPE	HEALTH RISK CRITERIA VIOLATED ¹	POLLUTANT OF CONCERN
NEMAHA RIVER BASIN - CON'T					
93	Prairie Knoll Lake	NE2-L0080	Largemouth Bass	Mercury	Mercury
94	Iron Horse Trail Lake	NE2-L0090	Largemouth Bass / Bluegill / Black Crappie	Mercury	Mercury
95	Burchard Lake	NE2-L0120	Largemouth Bass	Mercury	Mercury
96	Mayberry Lake - WMA	NE2-L0195	Largemouth Bass	Mercury	Mercury
97	Wilson Creek 2X - WMA	NE3-L0040	Largemouth Bass / Black Crappie	Mercury	Mercury
98	Wirth Brothers Lake	NE3-L0045	Largemouth Bass / Black Crappie / Bluegill	Mercury	Mercury
NIOBRARA RIVER BASIN					
99	Schoolhouse Lake	NI3-LXXXX	Largemouth Bass / Black Crappie	Mercury	Mercury
100	Box Butte Reservoir	NI4-L0080	Largemouth Bass / Smallmouth Bass	Mercury	Mercury
101	Cottonwood Lake	NI4-L0010	Largemouth Bass	Mercury	Mercury
102	Cub Creek Lake	NI3-L0070	Largemouth Bass	Mercury	Mercury
103	Merritt Reservoir	NI3-L0330	Walleye / Largemouth Bass	Mercury	Mercury
104	Shell Lake	NI4-L0020	Largemouth Bass / Black Crappie	Mercury	Mercury
105	West Long Lake	NI4-L0300	Largemouth Bass	Mercury	Mercury
106	Valentine Mill Pond	NI3-L0170	Largemouth Bass / Bluegill	Mercury	Mercury
107	Walgren Lake	NI4-L0050	Largemouth Bass / Black Crappie	Mercury	Mercury
NORTH PLATTE RIVER BASIN					
108	Bridgeport Middle Lake	NP3-L0030	Largemouth Bass	Mercury	Mercury
109	Crescent Lake	NP2-L0095	Largemouth Bass	Mercury	Mercury
110	Island Lake	NP2-L0110	Largemouth Bass	Mercury	Mercury
111	Blue Lake	NP2-L0150	Largemouth Bass	Mercury	Mercury
112	Morrill Sandpit - South	NP3-L0140	Largemouth Bass	Mercury	Mercury
113	Morrill Sandpit - North	NP3-L0160	Largemouth Bass	Mercury	Mercury
114	North Platte River	NP3-10000	Common Carp	Hazard Index	Mercury, Selenium
115	Smith Lake	NP2-L0290	Largemouth Bass	Mercury	Mercury
REPUBLICAN RIVER BASIN					
116	Frenchman #1 WMA West Lake	RE3-L0084	Largemouth Bass / Bluegill	Mercury	Mercury
117	Oxford City Lake	RE2-L0020	Largemouth Bass	Mercury	Mercury
118	Frenchman #2 WMA Middle Lake	RE3-L0085	Largemouth Bass	Mercury	Mercury
119	Frenchman #3 WMA East Lake	RE3-L0086	Largemouth Bass	Mercury	Mercury
120	Hayes Center WMA Lake	RE3-L0080	Largemouth Bass	Mercury	Mercury

¹ The *Risk Criteria* established by the Nebraska Fish Tissue Advisory Committee include fish tissue that: (1) are found to have mercury concentrations > 0.215 mg/kg, (2) have contaminant concentrations that may be associated with adverse health effects (Hazard Index ≥ 1.0) or (3) may be associated with an excess Cancer Risk ≥ 1 in 10,000 when ingested.

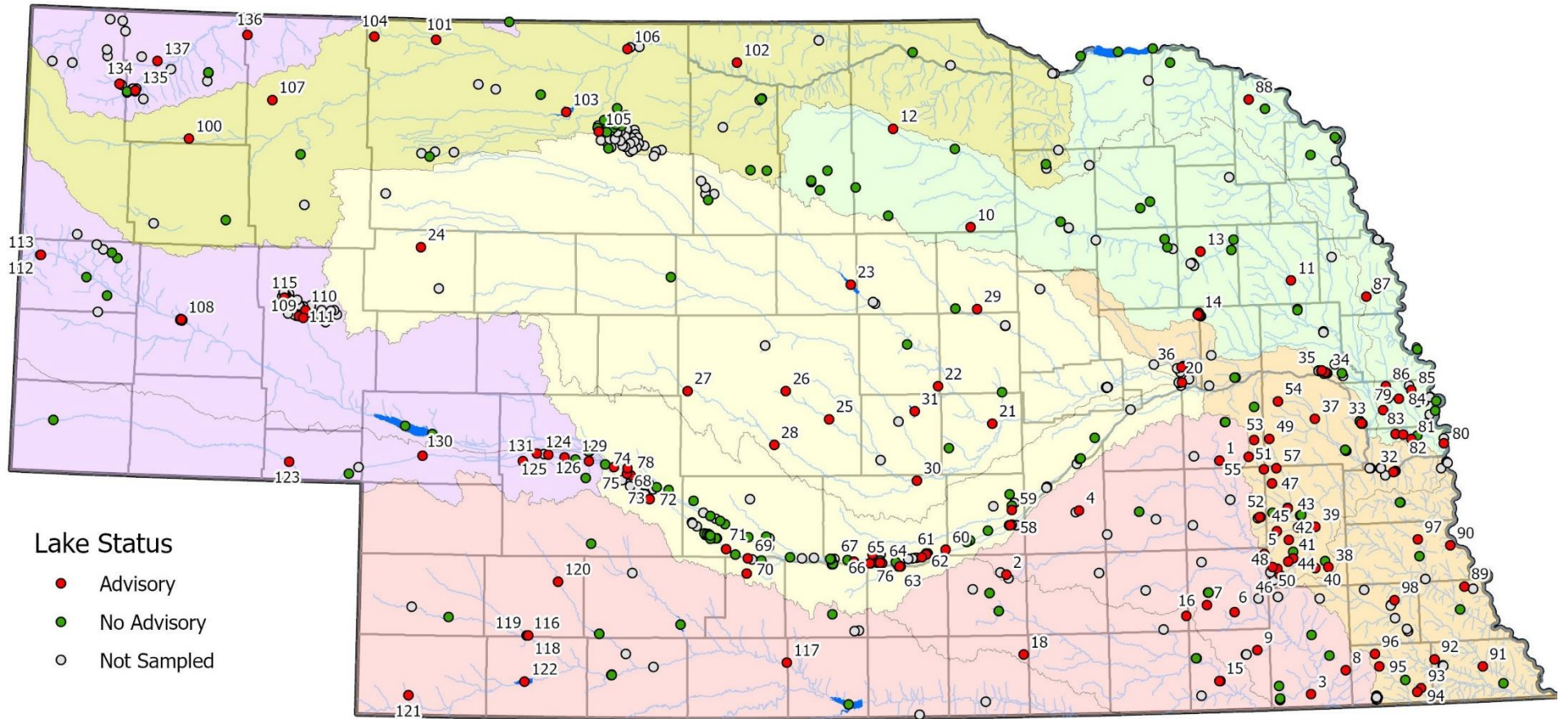
APPENDIX A – Continued

Map I.D. #	WATERBODY	ID	FISH TYPE	HEALTH RISK CRITERIA VIOLATED¹	POLLUTANT OF CONCERN
REPUBLICAN RIVER BASIN - CON'T					
121	Rock Creek Lake	RE3-L0120	Largemouth Bass	Mercury	Mercury
122	Swanson Reservoir	RE3-L0070	Walleye	Mercury	Mercury
SOUTH PLATTE RIVER BASIN					
123	Chappell Interstate Lake	SP2-L0010	Largemouth Bass	Mercury	Mercury
124	East Hershey Lake	SP1-L0040	Largemouth Bass	Mercury	Mercury
125	East Sutherland Lake	SP1-L0070	Largemouth Bass	Mercury	Mercury
126	Hershey Lake	SP1-L0050	Largemouth Bass	Mercury	Mercury
127	Maloney Res. Outlet Canal - above hydro	SP1-10500	Common Carp / Smallmouth Bass	Cancer Risk, Hazard Index / Mercury	PCBs, Mercury / Mercury
128	Maloney Res. Outlet Canal - below hydro	SP1-10500	Channel Catfish / Smallmouth Bass	Hazard Index / Mercury	PCBs, Mercury / Mercury
129	North Platte Interstate Lake	SP1-L0010	Largemouth Bass / Yellow Perch	Mercury	Mercury
130	Ogallala City Park Lake (Humphrey Pond)	SP1-L0090	Largemouth Bass	Hazard Index	PCBs, Mercury
131	Sutherland Reservoir	SP1-L0080	Common Carp	Hazard Index	PCBs, Mercury
132	Sutherland Cooling Pond	SP1-LXXXX	Largemouth Bass / Flathead Catfish	Mercury	Mercury
133	Sutherland Outlet Canal	SP1-10600	Channel Catfish	Hazard Index	PCBs, Mercury
WHITE-HAT CREEK RIVER BASIN					
134	Carter P. Johnson Lake	WH1-L0200	Largemouth Bass	Mercury	Mercury
135	Grabel Pond #5	WH1-L0170	Largemouth Bass	Mercury	Mercury
136	Isham Dam Lake	WH1-L0010	Largemouth Bass / Bluegill / Yellow Perch	Mercury	Mercury
137	Whitney Reservoir	WH1-L0060	White Bass	Mercury	Mercury

¹ The *Risk Criteria* established by the Nebraska Fish Tissue Advisory Committee include fish tissue that: (1) are found to have mercury concentrations > 0.215 mg/kg, (2) have contaminant concentrations that may be associated with adverse health effects (Hazard Index ≥ 1.0) or (3) may be associated with an excess Cancer Risk ≥ 1 in 10,000 when ingested.

LAKE - FISH CONSUMPTION ADVISORY SITES IN NEBRASKA THROUGH 2021

(See Appendix A table for advisory information associated with site identification numbers displayed)



STREAM - FISH CONSUMPTION ADVISORY SITES IN NEBRASKA THROUGH 2021

(See Appendix A table for advisory information associated with site identification numbers displayed)

